



# Injury Surveillance Committee



Presenter: Yasushi Teranishi, chair



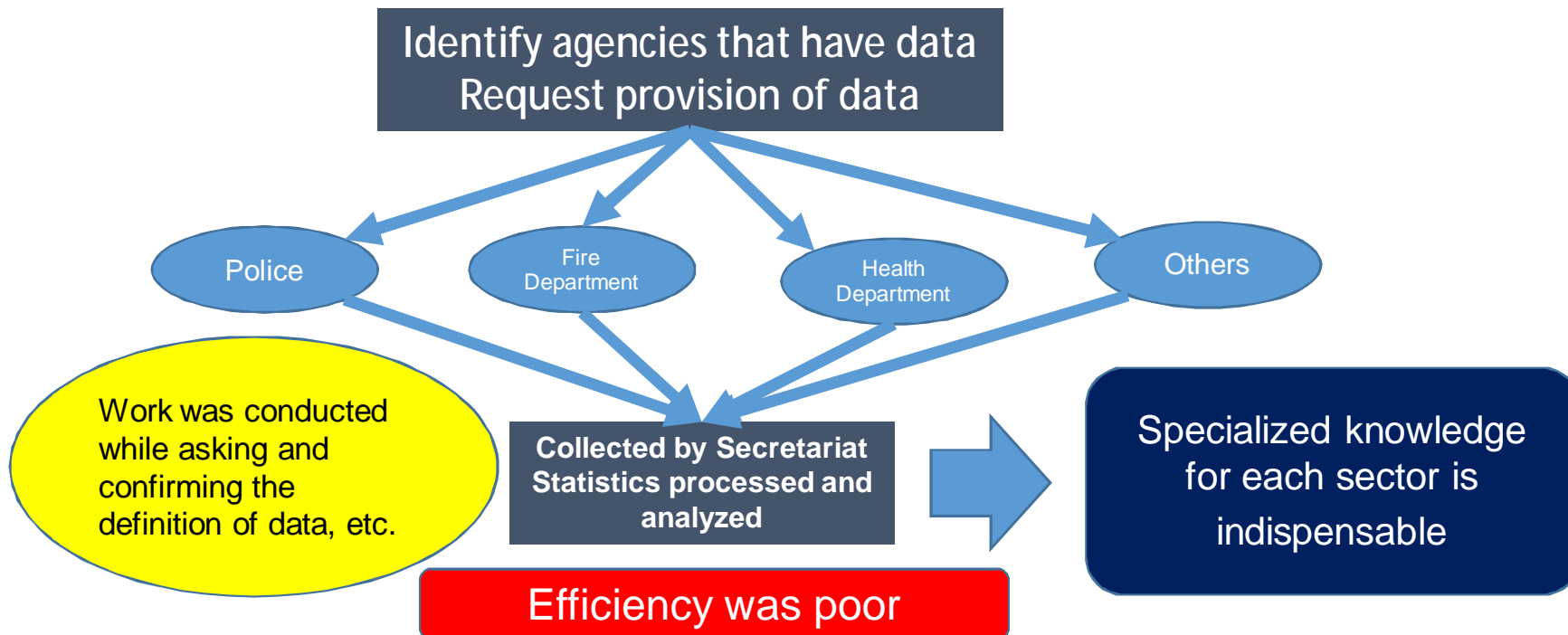
# 1. Necessity of Injury Surveillance Committee

## Necessity 1: To conduct efficient data collection and analysis

The FY2014 Community Diagnosis was conducted by the Secretariat (City's Safe Community Promotion Section) to understand the situation of injuries and accidents in Koriyama City, but the work efficiency was poor.

Collection and analysis of data just by Secretariat  
(City's Safe Community Promotion Section)

Fig. 1





## Necessity 2: To collect and analysis continuous data

Indicator 1: An infrastructure based on partnership and collaborations, governed by a cross-sectional group that is responsible for safety promotion in their community.

Indicator 2: Long term sustainable programs covering both genders and all ages, environments and situations

Indicator 3: Programs that target high-risk groups and environments, and programs that promote safety for vulnerable groups

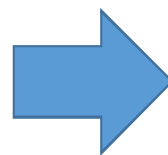
**Indicator 4: Programs based on available evidence**

**Indicator 5: Programs that document the frequency and causes of injuries**

**Indicator 6: Evaluation measures to assess their programs, processes and effects of change**

Indicator 7: Ongoing participation in national and international Safe Community networks

Secretariat is not capable of continuously and efficiently conducting indicators 4 to 6.



**Creation of Injury Surveillance Committee**

Decision by Safe Community Steering Committee (May 2015)



## 2. Role of Injury Surveillance Committee

### **Role 1** Collection and analysis of data on injuries and accidents (Indicator 4, Indicator 5)

- Collection of data on number of cases, etc., and preparation of a sustainable system
- Comparison of nationwide, Fukushima Prefecture and Koriyama City data
- Comparison by age groups, comparison by communities, etc.

### **Role 2** Verification of Safe Community activities (Indicator 4, Indicator 6)

- Is the data used as evidence for activities appropriate?
- Is the method for measuring the effect of activities appropriate?
- Are the set indicators appropriate?, etc.

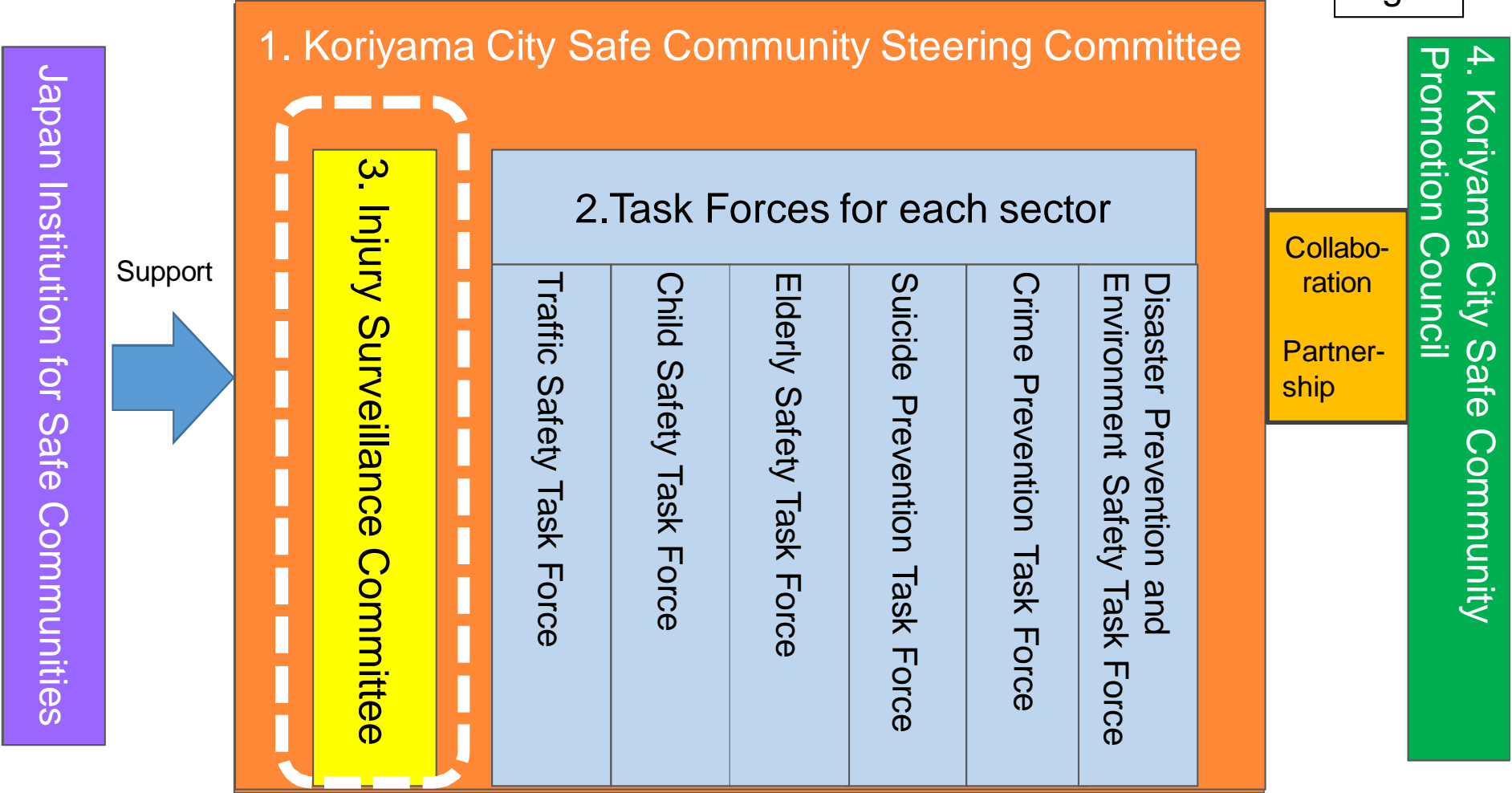
### **Role 3** Advice for Safe Community activities based on data (Indicator 4, Indicator 5)

- Give advice to Steering Committee and Task Forces.



# Creation of Injury Surveillance Committee in May 2015

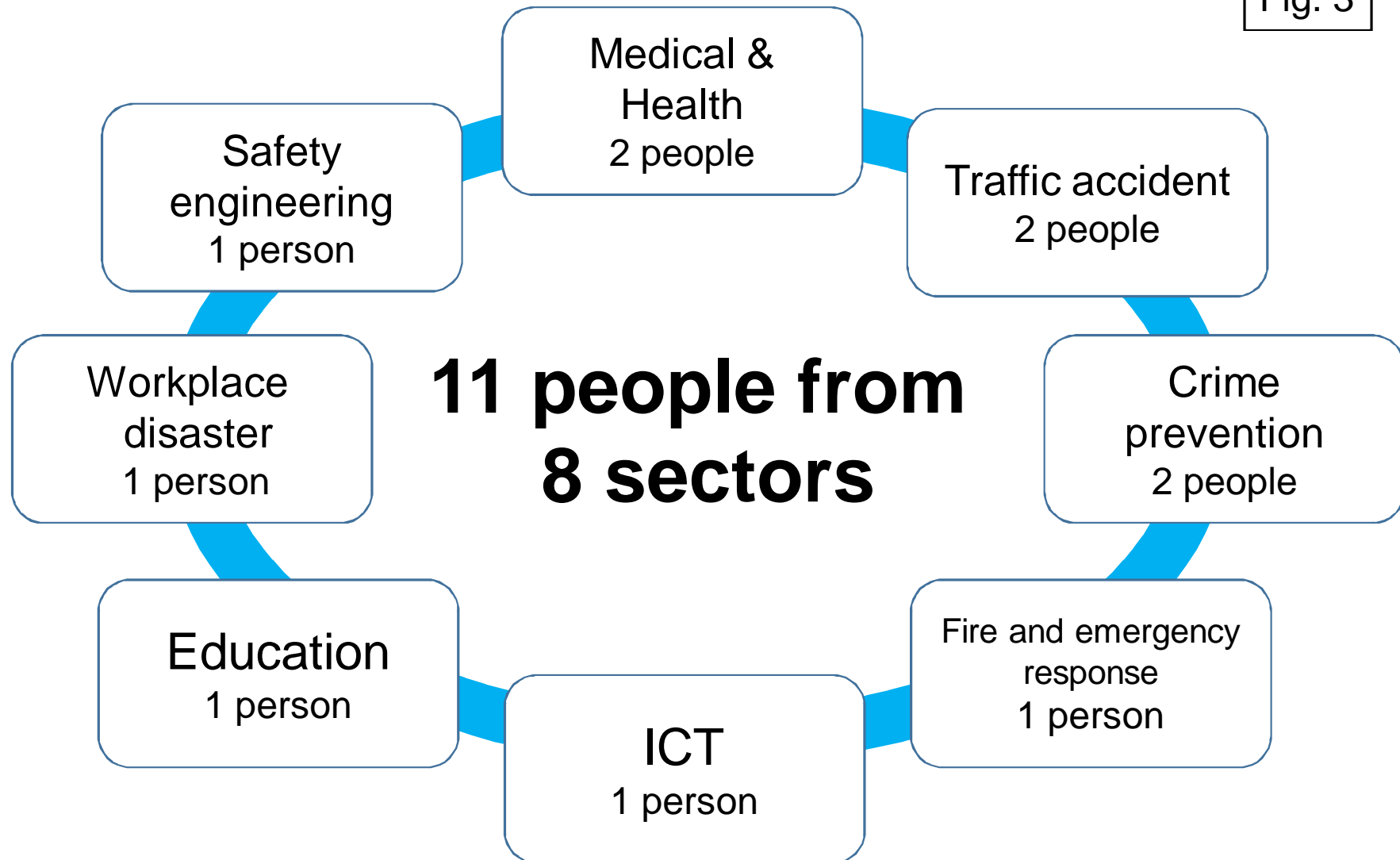
Fig. 2





### 3. Composition of Injury Surveillance Committee

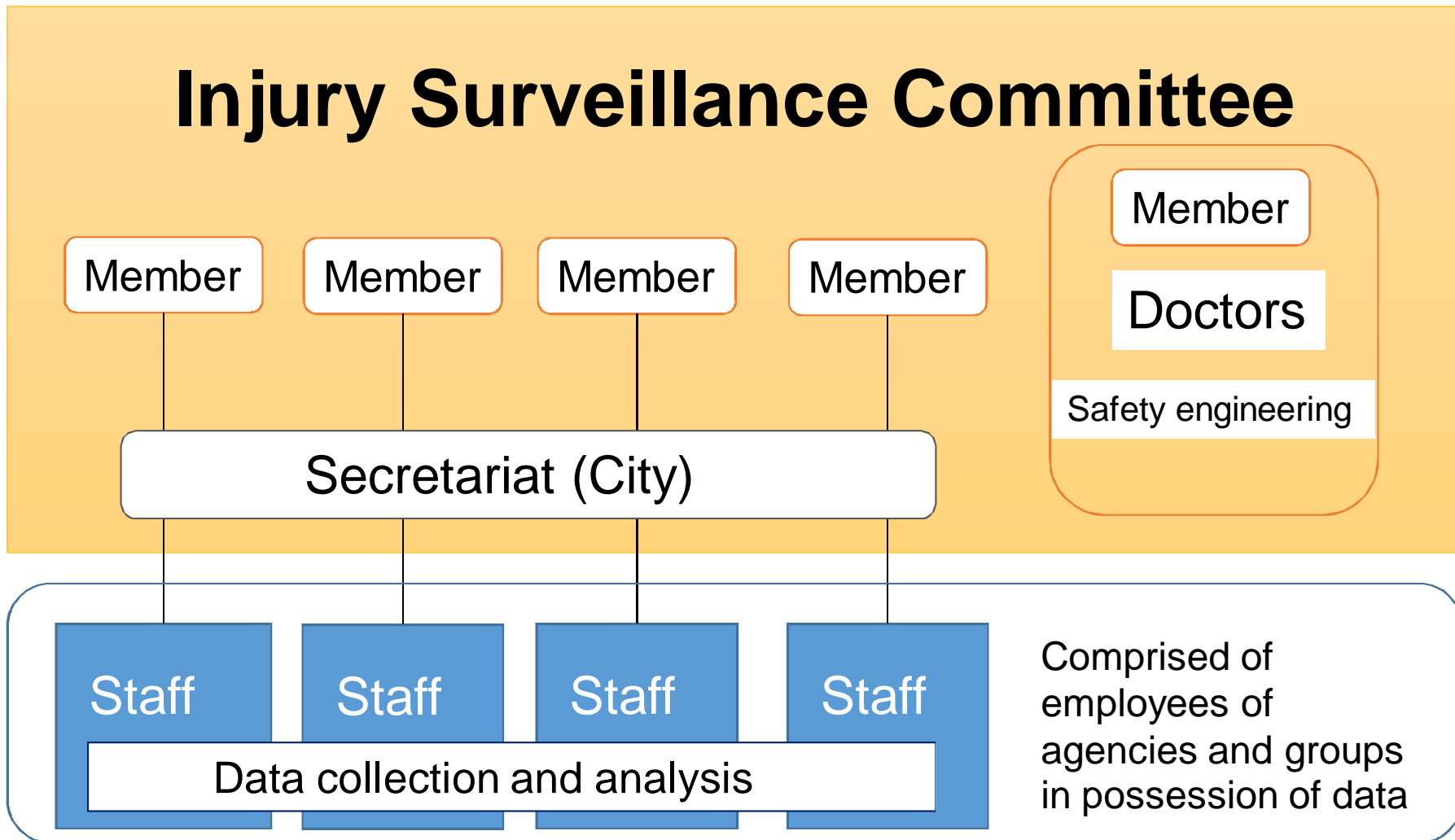
Fig. 3





Members do not participate just as individuals, and instead lead their staff to collect and analyze data.

Fig. 4



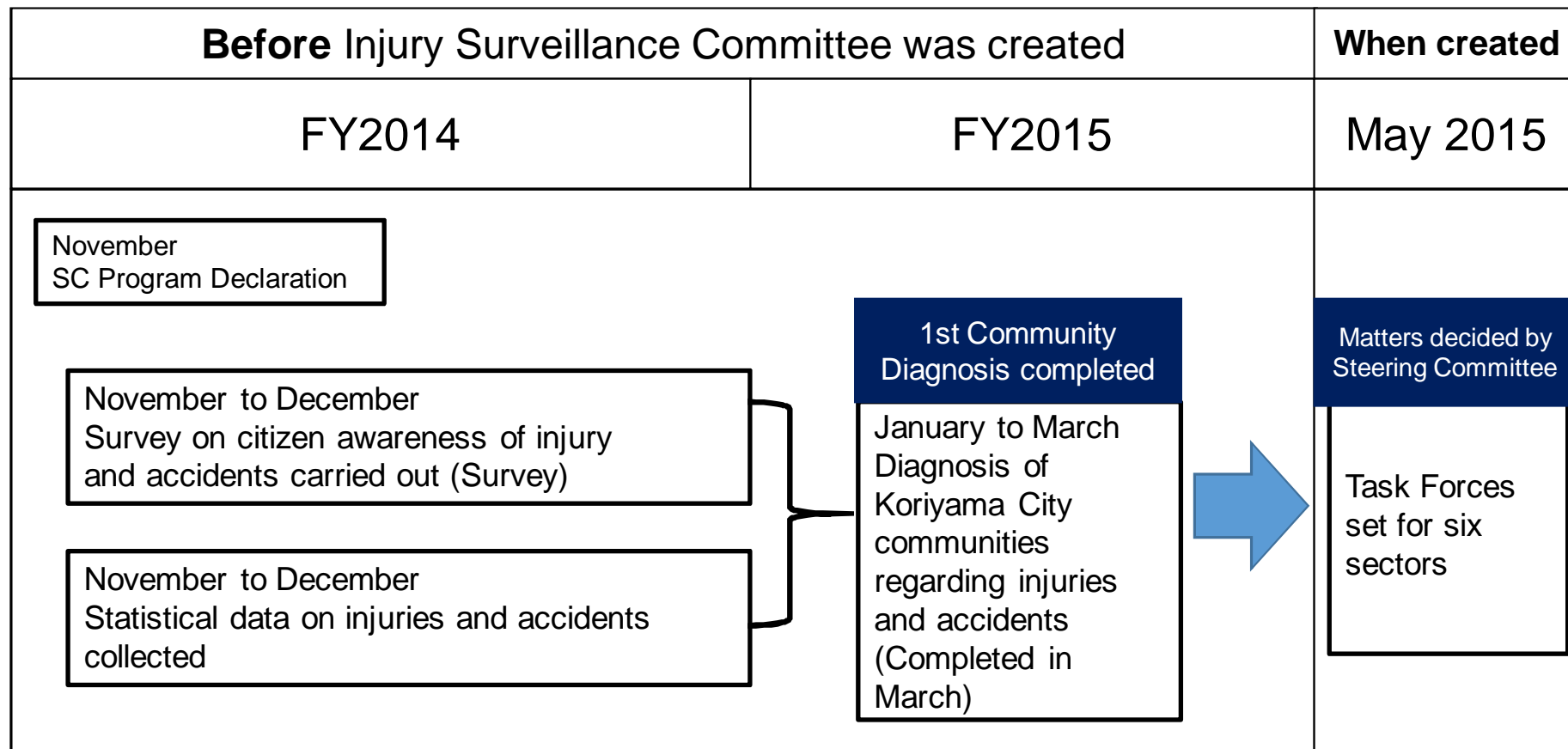


## 4. Injury Surveillance Committee Activities

### 1. Before the Committee was created, data was collected and analyzed by the Secretariat

The 1st Community Diagnosis had already been completed when the Injury Surveillance Committee was created, and it was decided to create Task Forces for six sectors.

Fig. 5







## 2. Outline of activities conducted to present

Fig. 6

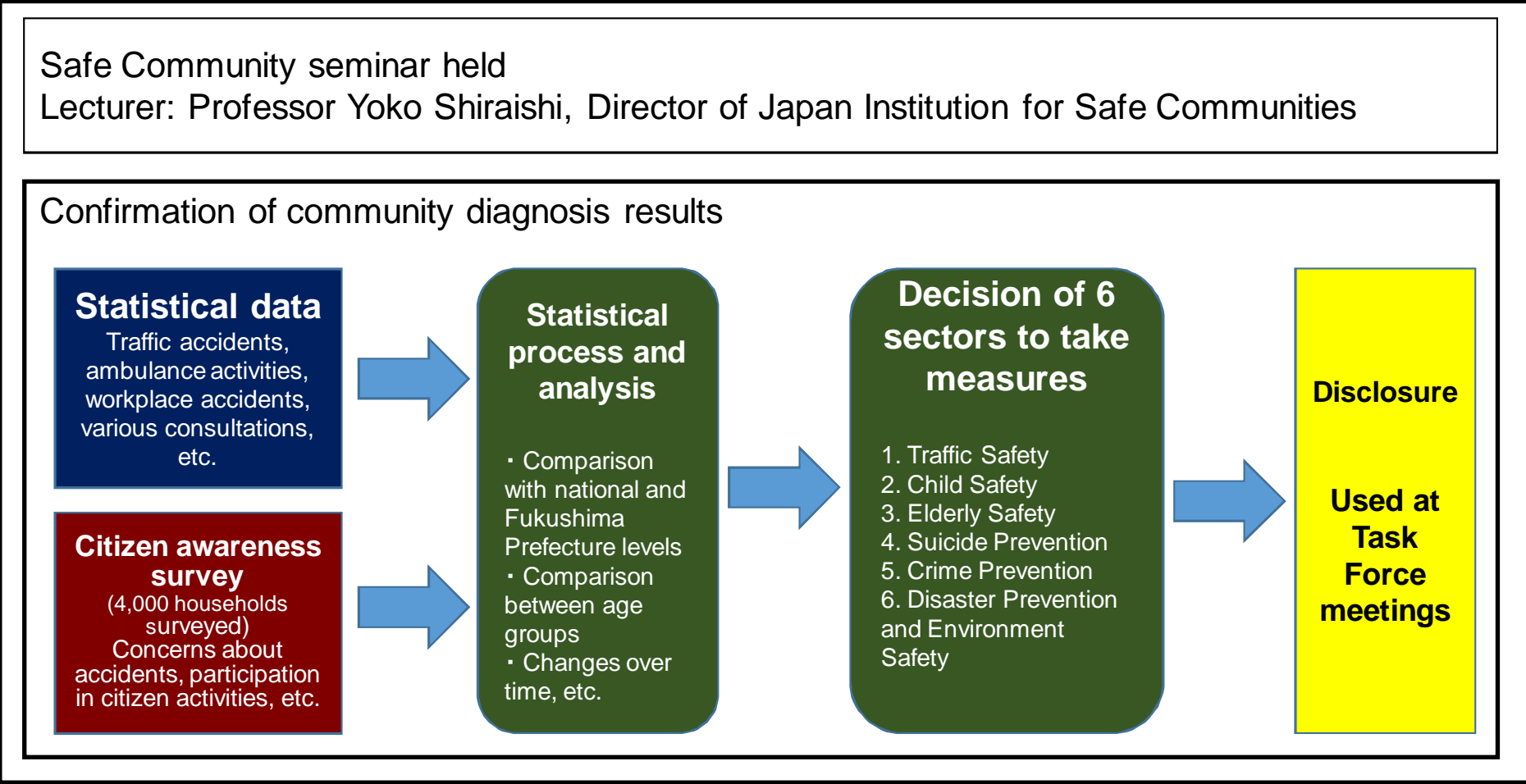
Session	Date	Main details
1	May 26, 2015	<ul style="list-style-type: none"> <li>• Seminar on Safe Community seminar held</li> <li>• Results of community diagnosis on injuries and accidents, etc. confirmed</li> <li>• Reasons for selecting six sectors for which measures are to be taken confirmed</li> </ul>
2	February 18, 2016	<ul style="list-style-type: none"> <li>• Priority challenges selected by each Task Force verified based on data, and advice given on areas with data missing, etc.</li> <li>• Missing data provided to Task Forces (Provided at a later date when data became available)</li> </ul>
3	August 18, 2016	<ul style="list-style-type: none"> <li>• Studies on actual measures for each Task Force confirmed</li> <li>• Data required for each Task Force confirmed (Decided to conduct citizen survey for areas missing data)</li> <li>• Methods of conducting 2nd Community Diagnosis discussed</li> </ul>



## 3. 1st Injury Surveillance Committee meeting held on May 26, 2015

- Safe Community seminar held, and results of community diagnosis on injuries and accidents, etc. confirmed

Fig. 7





## Main injury data used by Task Forces and the update frequency

Fig.8

Update frequency	Name of statistics	Traffic Safety	Child Safety	Elderly Safety	Suicide Prevention	Crime Prevention	Disaster Prevention and Environment Safety
Annually	Demographic statistics			●	●		
	Number of workplace accidents						●
	Suicide statistics				●		
	Police statistics	●				●	
	White Paper on Traffic Safety	●					
	White Paper on Community Safety					●	
	Emergency Transport Data	●	●	●	●	●	●



## Data, other than injury data, used by Task Forces and the update frequency

Fig. 9

Frequency of implementation	Name of statistics	Traffic Safety	Child Safety	Elderly Safety	Suicide Prevention	Crime Prevention	Disaster Prevention and Environment Safety
Monthly	Survey on illegal solicitation and scouting					●	
Yearly	Situation of programs to support the elderly			●			
	Number of consultations regarding elder abuse			●			
	Number of consultations regarding child abuse		●				
	Number of consultations regarding abuse by spouse, etc.					●	
Every 2 years	Citizen Awareness Survey	●	●	●	●	●	●



## 4. 2nd Injury Surveillance Committee meeting held on February 18, 2016

● Priority challenges selected by each Task Force verified based on data, and advice given on areas with data missing, etc.

Fig. 10

Sector	Details of advice
Traffic Safety	<p>Of the selected priority challenges, “Many bicycle accidents involving sr. high school students” was based on nationwide data, so advice given to analyze data for Koriyama City.</p> <p>-&gt; Data was provided from Injury Surveillance Committee at a later date.</p>
Child Safety	<p>Of the selected priority challenges, there was no data showing that “child abuse was increasing”.</p> <p>The following situation was identified after talking to the Task Force.</p> <p>-&gt; The rules (recording methods) for statistics differed according to the consulting services.</p> <p>-&gt; The Prefecture and City have consulting services, but the jurisdiction differ so data cannot simply be totaled.</p> <p>This was set as an issue to study in the future.</p>



## 5. Provision of data to Task Forces after 2nd meeting \* Provided as needed

- Missing data was provided to each Task Force.

### **Situation of bicycle accidents in Koriyama City 2012 to 2015**

- No. of accidents by month ○ No. of accidents by day ○ No. of accidents by time zone
- No. of accidents by type (rear-end collisions, front-on collisions, when turning right or left, etc.)
- No. of accidents by school grade ○ No. of accidents by type of road (intersection, single lane, etc.)
- No. of accidents by traffic rule violation (ignoring red lights, failure to stop, etc.)



## 6. 3rd Injury Surveillance Committee meeting held on August 18, 2016

Six months had passed from last meeting, so committee met to identify state of progress.  
It was found that the following data was newly required.

### 1. Traffic Safety Task Force

[Incidents of close call bicycle accidents]

[Statistics of bicycle accidents according to occurrence situation ]

[Awareness Survey of Elderly People]

### 2. Elder Safety Task Force

[Place of accident and injury from tumbling]

[Home environment of people transported by ambulance because of accidental suffocation]

[Place where accidental suffocation occurred]



### 3. Suicide Prevention Task Force

[Data for emergency transport]

[Data for transport to hospital]

[Recognition of Suicide Prevention Counseling Services]

### 4. Crime Prevention Task Force

[Recognition of information morals, etc.]

[Opinions regarding solicitation, etc.]

[Opinions regarding security cameras, etc.]

### 5. Disaster Prevention and Environment Safety Task Force

[Transition in number of workplace accidents]

[Transition in number of workplace accidents by industry]

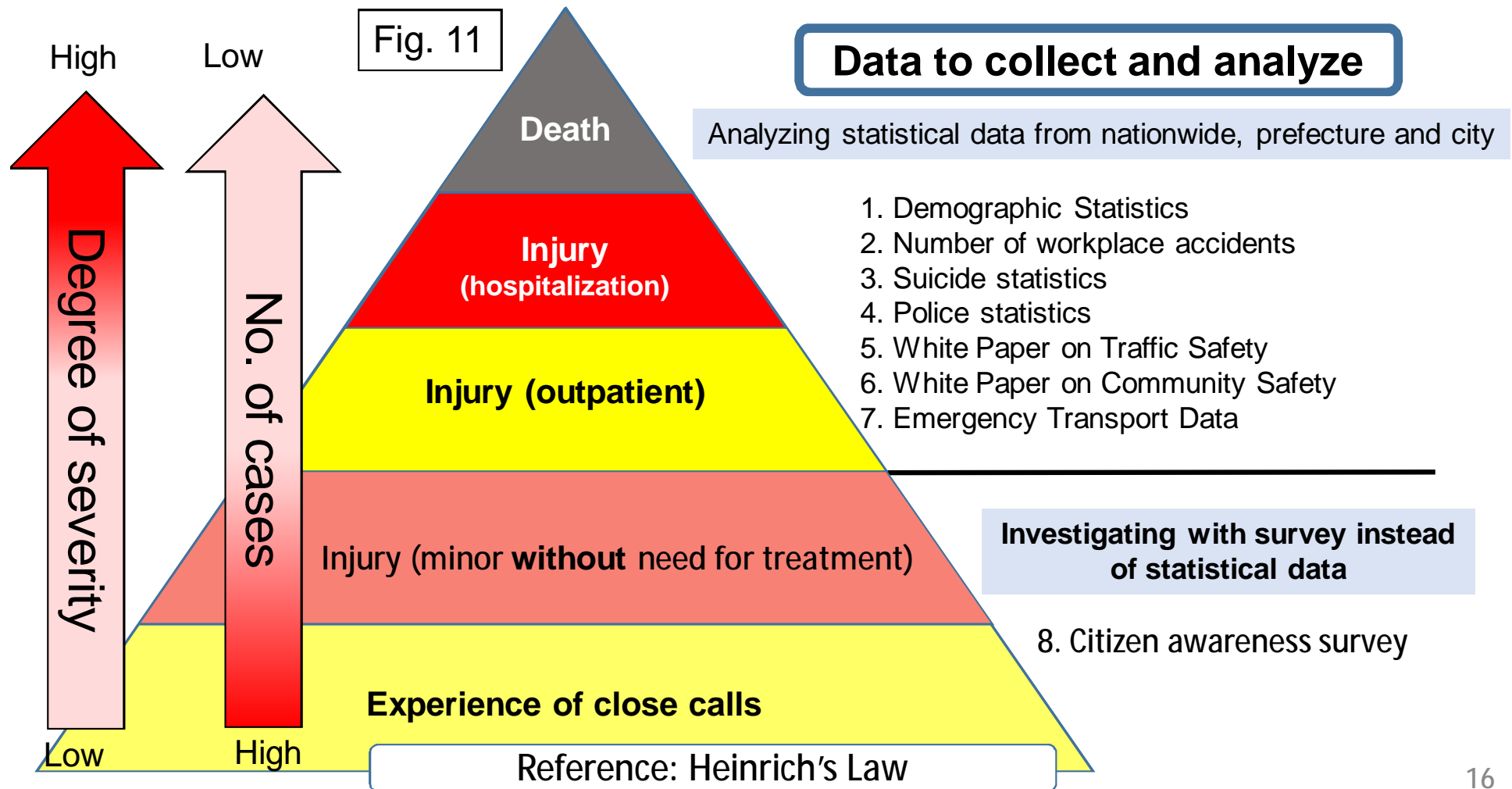
It was decided to conduct a survey during the 2nd Community Diagnosis in the fall of 2016, and to collect as much data as possible.





## 7. 2nd Community Diagnosis Period: October 2016 to March 2017

The bi-annual community diagnosis is underway. Citizens' experience of close call accidents and awareness of injuries and accidents are also being investigated.





## 7. 2nd Community Diagnosis Period: October 2016 to March 2017 \* Programs underway

### Citizen awareness survey for 2nd Community Diagnosis

#### 1. Purpose

Investigate injuries, accidents, close-calls, and factors for citizens' concerns, etc. that cannot be understood with public statistical data, etc.

\* Previous survey conducted in FY2014

#### 2. Target

4,000 households and 8,000 people making up those households that are randomly selected from the Koriyama City Basic Resident Register \* Same conditions as previous time.

#### 3. Schedule

FY2016, September to October	Surveys sent out and collected
November to December	Results input, tabulated, and analyzed
FY2017, January to February	Community diagnosis conducted with statistical data
March	Community diagnosis results released



## 7. 2nd Community Diagnosis Period: October 2016 to March 2017 \* Programs underway

### Citizen awareness survey for 2nd Community Diagnosis

#### Details of survey \* Partial excerpt

Q4: Where are you worried about getting injured in your home?  
(Multiple answers allowed)

1. No places	2. Yard, wall, ditch	3. Entrance, gate
4. Parking lot	5. Hallway	6. Stairs
7. Living room	8. Bedroom, children's room	9. Kitchen
10. Bathroom, washstand area, toilet	11. Veranda	12. Others ( )

#### More details

The previous survey did not ask where injuries had occurred in the home.

#### Investigation of close calls

Investigation of cases that did not result in accidents

Q15. When did you ever feel risks from bicycles ridden by other people (or were you involved in accident)?

1. Using cell phone while riding bicycle	2. Not staying on left	3. Ignoring red lights
4. Two or more bicycles riding side by side	5. Ignoring stop signs	6. Excessive speed
7. Failure to turn light on at night	8. Wearing earphones while riding bike	9. Others ( )



## 7. 2nd Community Diagnosis Period: October 2016 to March 2017 \* Programs underway

### Details of survey \* Partial excerpt

Q16. Do you know of a child abuse counseling service in Koriyama City?  
(Select one)

1. Yes -> Go to Q17.      2. No -> Go to Q19.

Setting of investigation item required by Task Forces

Q17. which of the following counseling services for child abuse do you know?  
(Select answer for each one)

Name of Counseling Service	Phone	Know	Do not know
Koriyama City Child and Home Counseling Center	Phone: 024-924-3341	1	2
Fukushima Prefecture Child Welfare Counseling Services	Phone: 024-935-0611	1	2
National hotline for child counseling services	Phone: 189	1	2
Children's Rights 110 Hotline	Phone: 0120-007-110	1	2

Recognition of each counseling service also investigated

Q18. Where did you learn about counseling services for child abuse?  
(Multiple answers allowed)

1. Leaflet, pamphlet	2. TV	3. Koriyama City website
4. Fukushima Prefecture website	5. National government website	6. Internet information
7. Koriyama Gazette	8. Newspaper	9. Radio
10. Lectures, seminars, schools, etc.	11. Others ( )	

In addition to recognition, method of recognition investigated



## 5. Future Activities

1. Completion of 2nd Community Diagnosis  
Scheduled to be released in March 2017

2. Verification of performance indicators and evaluation methods for measures proposed by each Task Force



Thank you for listening.

We ask for your guidance.

Injury Surveillance Committee