

Koriyama City Safe Community Steering Committee  
Child Safety Task Force  
Activity Report

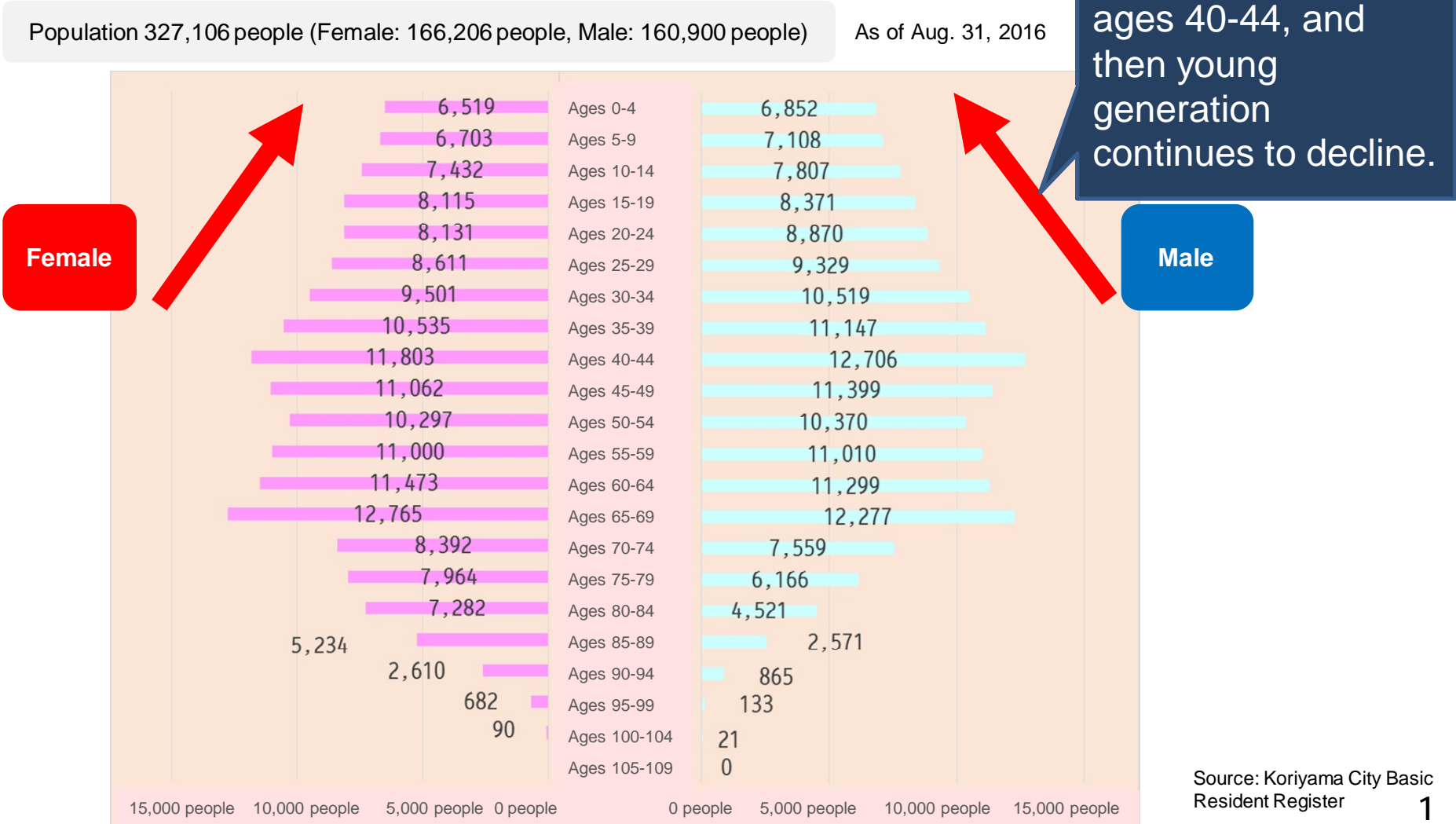


Presenter: Toshio Azuma, Chair

# 1. Background of Creating Child Safety Task Force

Background 1 The number of children is declining each year.

Fig. 1 Population in Koriyama City by age group



## Background 2 Emergency transports for infants ages 0 to 6 are high following the elderly.

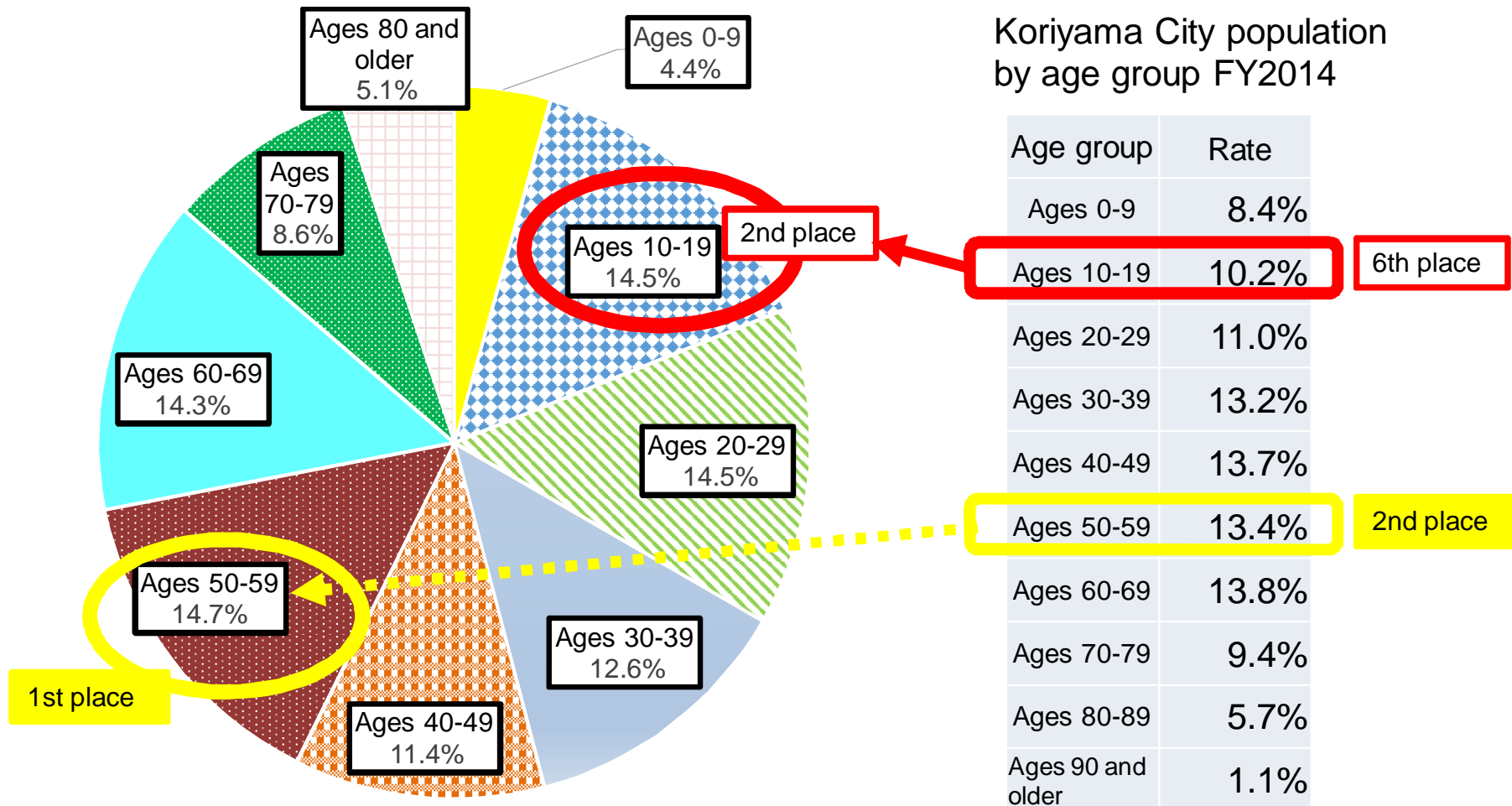
Fig. 2 Number of emergency transports in Koriyama City by age group FY2014  
\* Excluding illness

Age group	No. of cases	Composition ratio of cases	Population (people)	No. of cases per population of 1,000
Infants (ages 0-6)	574 cases	4%	18,641 people	31 cases
Youth (ages 7-17)	536 cases	4%	34,718 people	15 cases
Working age (ages 18-64)	5,008 cases	39%	198,471 people	25 cases
Elderly (ages 65 and older)	6,834 cases	53%	72,544 people	94 cases
<b>Total</b>	<b>12,952 cases</b>	<b>100%</b>	<b>324,374 people</b>	<b>40 cases</b>

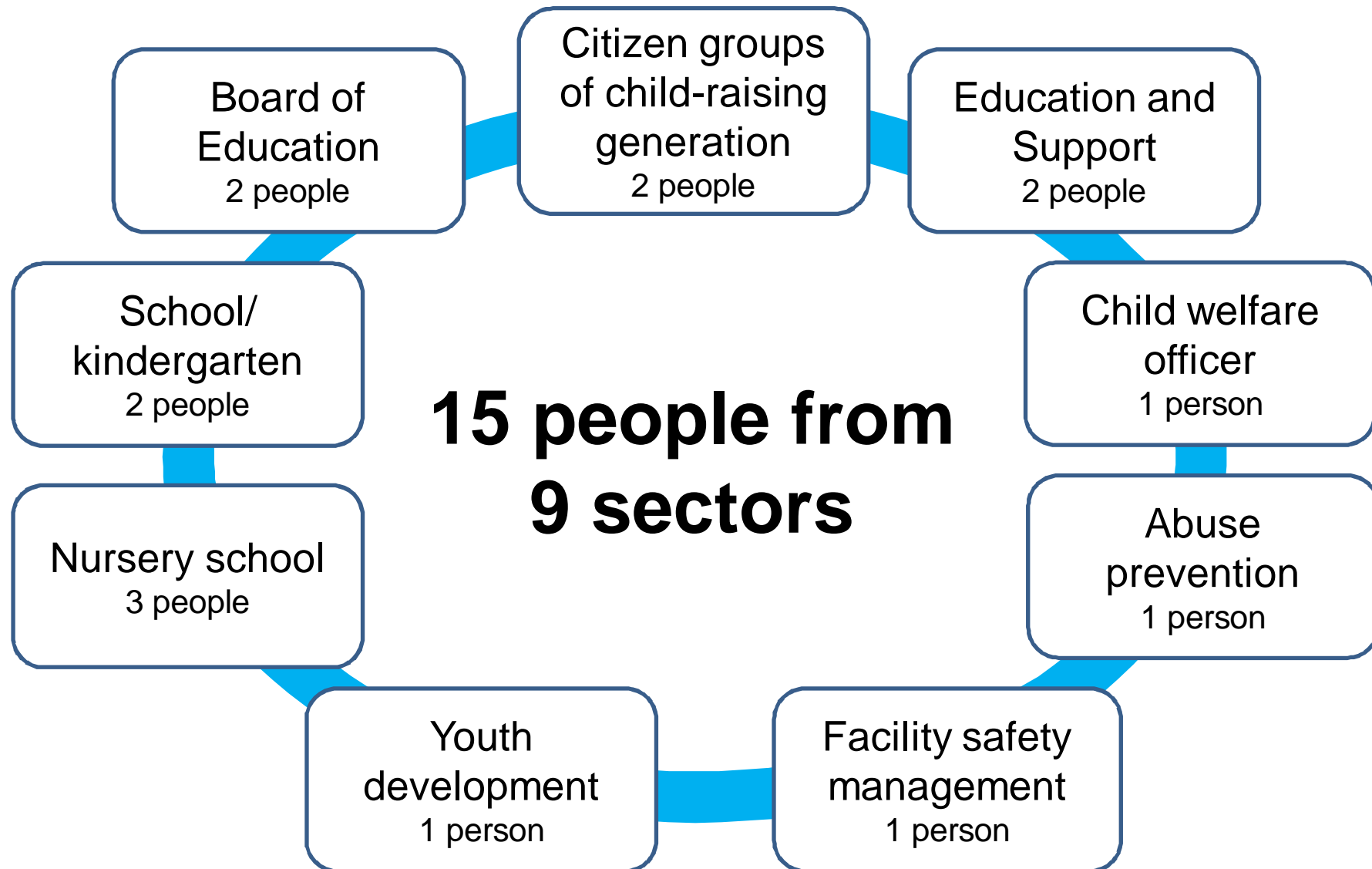
(Koriyama Fire Department 2014 Emergency Transport Data)

# Background 3 Emergency transports for traffic accidents involving ages 10 to 19 are high following ages 50-59.

Fig. 3 Rate of emergency transports for traffic accidents in Koriyama City by age group FY2014



## 2. Composition of Child Safety Task Force



# 3. History of Activities

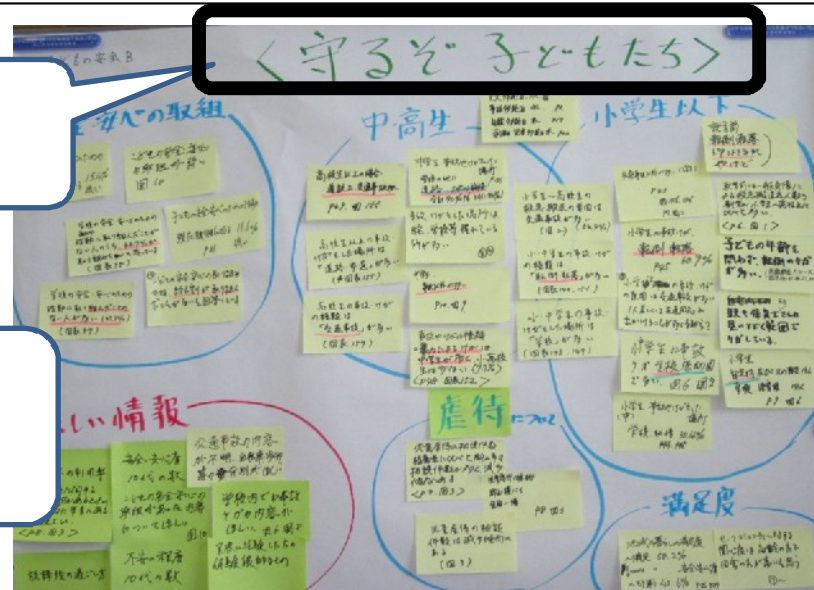
Ses- sion	Date	Purpose	Outline of activity
1	July 8	Training, confirmation of data	<ul style="list-style-type: none"> <li>• Safe Community training</li> <li>• Confirmation of data from FY2014 community diagnosis, etc.</li> </ul>
2	August 4	Study of subjective challenges	<ul style="list-style-type: none"> <li>• Study of each member's subjective challenges</li> </ul>
3	September 15	Study of objective challenges	<ul style="list-style-type: none"> <li>• Understanding characteristics of injuries and accidents from data</li> </ul>
4	October 13	Extraction of priority challenges	<ul style="list-style-type: none"> <li>• Confirmation of problem types and relation with data</li> </ul>
5	November 10	Extraction of priority challenges	<ul style="list-style-type: none"> <li>• Positioning of challenge priority</li> </ul>
6	December 14	Study of direction and targets	<ul style="list-style-type: none"> <li>• Study of environment, education, and restrictions</li> </ul>
7	January 18	Review of actual measures	<ul style="list-style-type: none"> <li>• Confirmation of measures currently underway for utilization and improvements, and study of new partnership and cooperation</li> </ul>
8	February 15		

Session	FY2016		Purpose	Outline of activity
9	FY2016	May 23	Review of actual measures	<ul style="list-style-type: none"> <li>Review of activities for new members</li> </ul>
10		June 7	Review of priority challenges	<ul style="list-style-type: none"> <li>Re-study of priority challenges using data</li> </ul>
11		July 12	Partial change of priority challenges	<ul style="list-style-type: none"> <li>Revision of vague sections of priority challenges</li> </ul>
12		August 4	Review of actual measures	<ul style="list-style-type: none"> <li>Confirmation of measures currently underway for utilization and improvements, and study of new partnership and cooperation</li> </ul>
13		October 27	Review of actual measures	<ul style="list-style-type: none"> <li>Confirmation of measures currently underway for utilization and improvements, and study of new partnership and cooperation</li> </ul>



Let's Protect Our Children

Holding of workshops



## 4. Opinions Received at Workshops

### [Subjective Challenges]

- There are many traffic accidents involving children on their way to and from school.
- In the preschool age group (ages 0 to 5), there are many injuries from tumbling or falling off of playground equipment.
- Child abuse is a social problem.
- School routes (sidewalks, bicycle lanes) are not sufficiently maintained.





## 5. Characteristics of Child Injuries and Accidents

### Characteristic 1

Emergency transports for infants ages 0 to 6 are high following the elderly

\* Fig. 2

### Characteristic 2

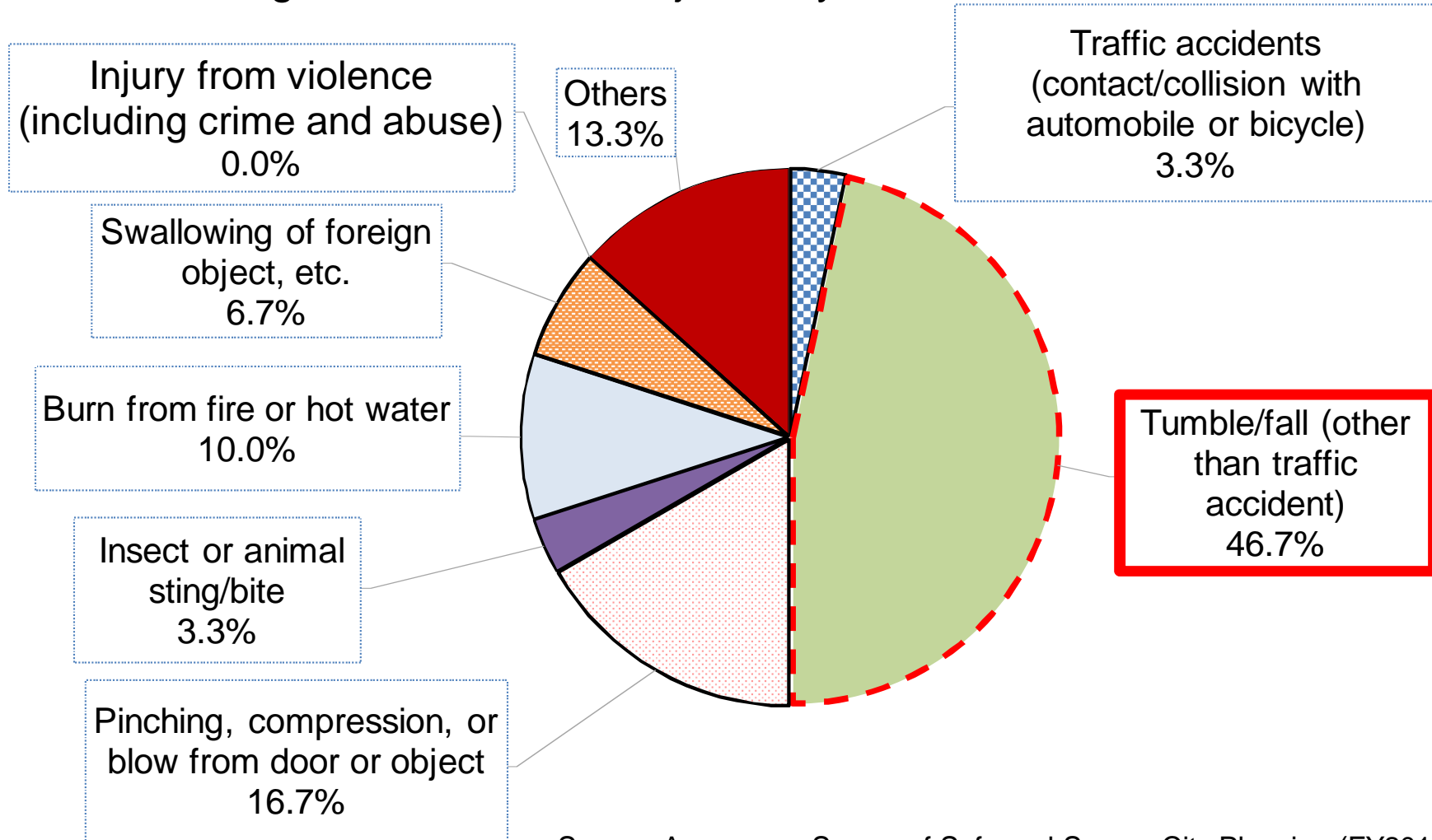
Emergency transports for traffic accidents involving ages 10 to 19 are high following ages 50 to 59

\* Fig. 3

When the Task Force was set up, the above characteristics had already been identified with the FY2014 community diagnosis.

Characteristic 3 Tumbles and falls (other than traffic accidents) are the leading cause of infant (ages 0-6) injuries (46.7%)

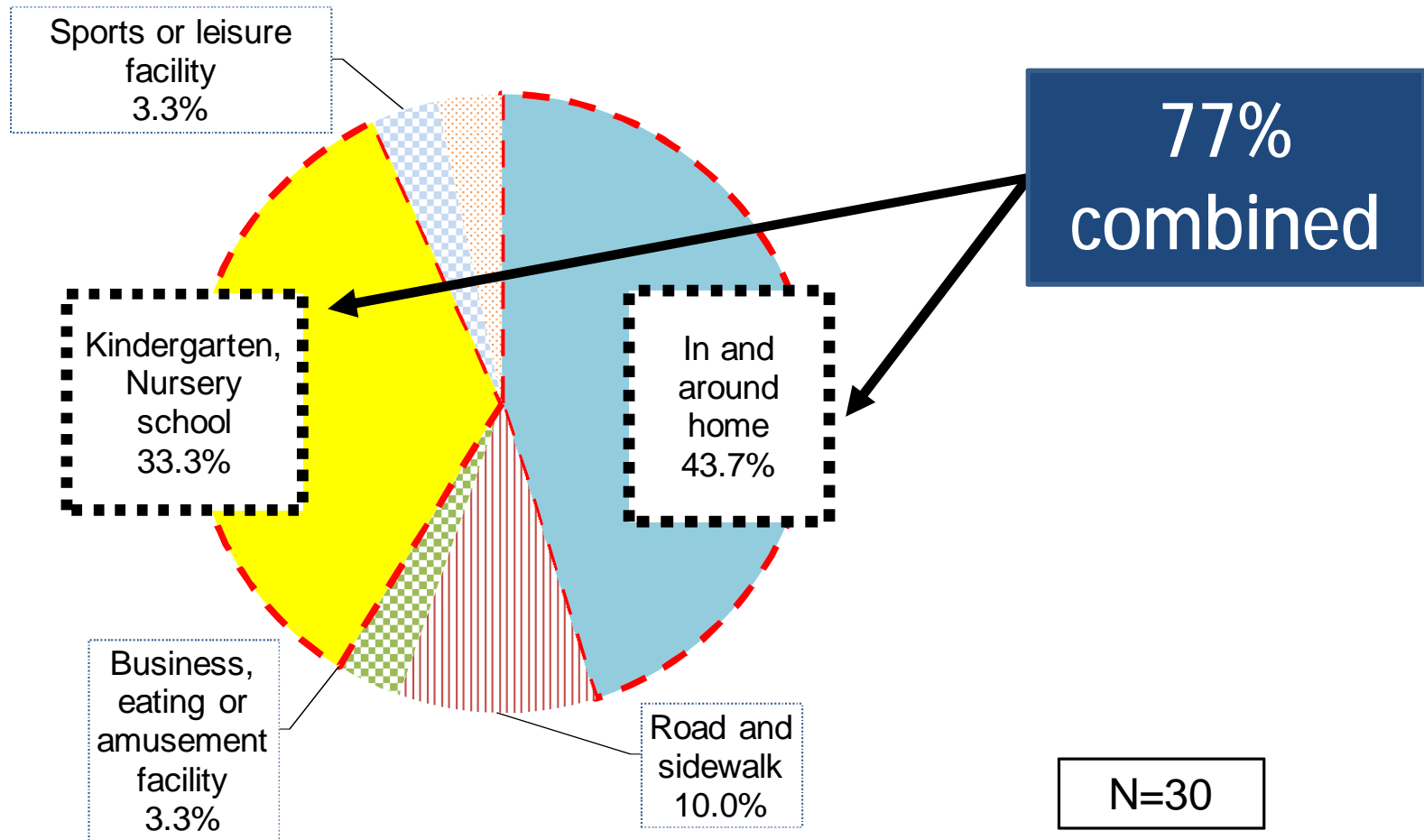
Fig. 4 Rate of infant injuries by cause



Source: Awareness Survey of Safe and Secure City Planning (FY2014)

# Characteristic 4 Infant (ages 0 to 6) injuries often occur “in and around home” and at kindergarten/nursery school

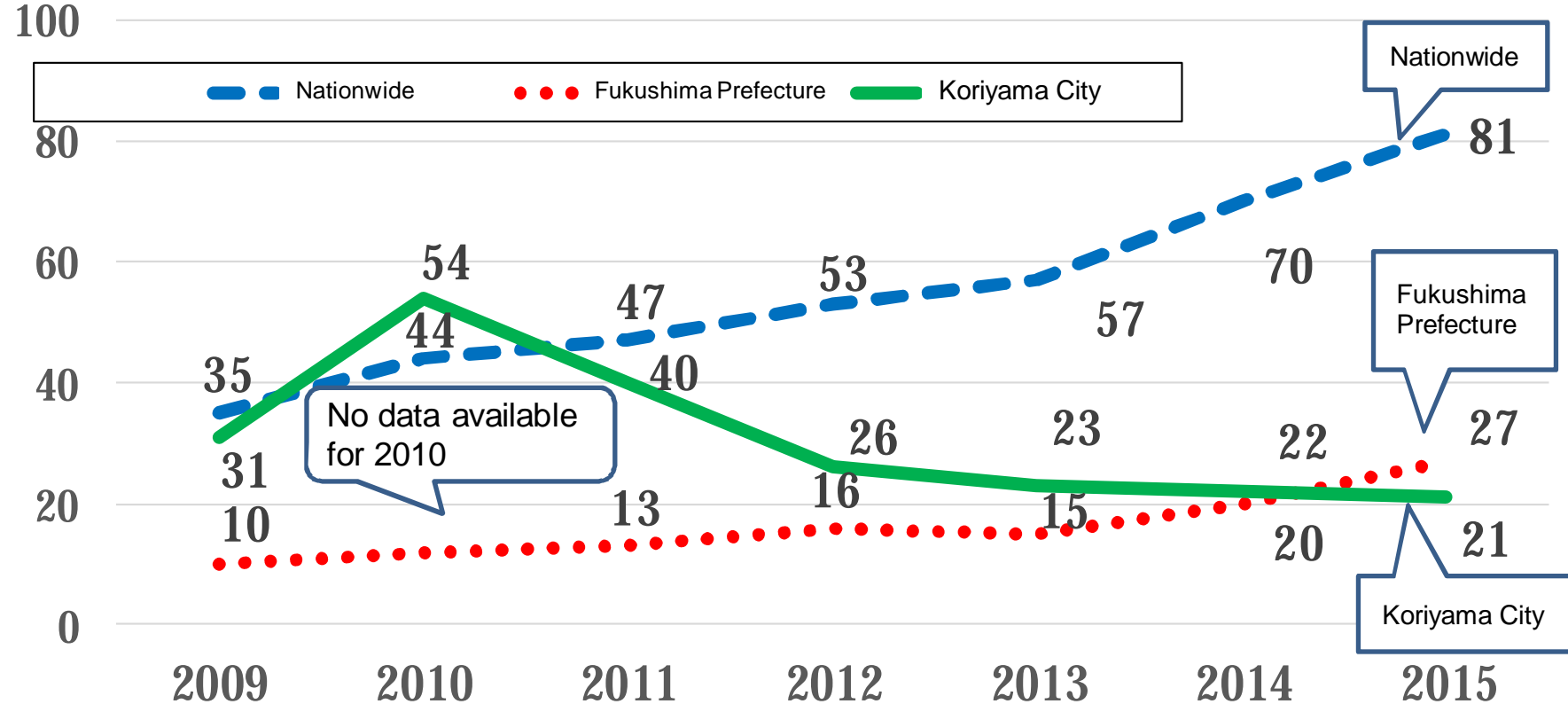
Fig. 5 Rate of cases where infant injuries occurred



Source: Awareness Survey of Safe and Secure City Planning (FY2014)

Characteristic 5 The number of consultations regarding child abuse received by the Koriyama City's Counseling Center continues to drop.

Fig. 6 Transition of number of child abuse consultations per population of 100,000



Source: Ministry of Health, Labour and Welfare "FY2009 and FY2015 Number of child abuse consultations handled by Child Counseling Services" Child and Home Counseling Center "FY2009 in FY2015 Transition of number of consultations, etc. handled"

## 6. Selection of Priority Challenges

**Fig. 3**

Challenge 1 Rate of traffic accidents is high for ages 10 to 19 (elementary to sr. high students)

**Fig. 6**

Challenge 2 Abuse toward children has not been eliminated

**Fig. 5**

Challenge 3 Infant (ages 0 to 6) injuries often occur in and around the home, and at kindergarten or nursery school

# 7. Current Programs at National, Prefectural, Police, City, and Community Level

		Nationwide, Prefecture, Police	City	Community level
Priority challenge 1 Rate of traffic accidents is high for ages 10 to 19 (elementary to sr. high students)	Improvement of environment	Improvement of road environment		Inspection of school route safety
	Rules and penalties	Traffic laws, crackdowns		
	Education and awareness	Seminars for malicious offenders	Traffic safety classes	School route safety instruction
Priority challenge 2 Abuse toward children has not been eliminated	Improvement of environment	Reinforced functions for childcare support and childcare facilities		Mimamori activities
	Rules and penalties	Increased penalties	Communication	
	Education and awareness	Education and promotion of Counseling Services		
Priority challenge 3 Infant (ages 0 to 6) injuries often occur at places thought to be safe such as in and around the home, and at kindergarten or nursery school	Improvement of environment	Improvement of facilities, optimization of number of workers		
	Rules and penalties	Revision of safety standards	Onsite investigation of facilities	
	Education and awareness	Education		
<p>Sharing of information through Internet, TV, and parenting magazines, etc. Sharing of accident information through interactions by child-raising generation</p>				

# 8. Directions, Priority Targets, and Programs

**Challenge 1** Rate of traffic accidents is high for ages 10 to 19 (elementary to sr. high students)

## Direction 1:

- A. Improvement of traffic safety education
- B. Creation of environment to prevent accidents

## Targets

- 1. Elementary to sr. high students
- 2. Drivers    3. Roads

**Program 1**  
Improvement of traffic safety education

Targets 1 and 2

### Details

Have parents participate from standpoint of “car drivers”  
(Currently under review)

**Program 2**  
Training on bicycle knowledge

Target 1

### Details

Instruction on how to inspect bicycle  
(Currently under review)

**Program 3**  
Improvement of road environment

Target 3

### Details

Notification of damaged roads by smartphones  
(Currently under review)

Challenge 2 Abuse toward children has not been eliminated

Direction 1:

A. Reduce abuse B. Learn how to interact with people

Targets

1 Parents 2. Community residents  
3. Children

**Program 1**

Hold “Childcare Seminar” during health checkups

Target 1

**Details**

Hold “Childcare Seminar” covering information on abuse during periodic child checkups currently held.  
(Currently under review)

**Program 2**

Hold “Abuse Prevention Seminars” at companies

Targets 1 and 2

**Details**

Visit companies to educate workers about child abuse, and create system to protect children in the community  
(Currently under review)

**Program 3**

(Currently under review)



**Challenge 3** Infant (ages 0 to 6) injuries often occur in and around the home, and at kindergarten or nursery school

Direction 1:

- A. Reduce injuries at home and nursery schools, etc.
- B. Create bodies resistant to injury

Targets

- 1. Ages 0 to 6 (infants)
- 2. Nursery schools and kindergartens, etc.

**Program 1**

Carry out "Exercise-Play" to increase motor abilities from an infant stage

Target 1

Details

(Currently under review)

**Program 2**

Currently under review

Target 2

Details

(Currently under review)

# 9. Future Directions

Priority challenges	Future direction (present goals)
<p><b>Challenge 1</b> Rate of traffic accidents is high for ages 10 to 19 (elementary to sr. high students)</p>	<p>Refine actual measures to a level that can actually be implemented.</p> <ul style="list-style-type: none"> <li>• Setting of performance indicators</li> <li>• Decision of performance measurement method</li> <li>• Decision of range to be addressed with partnership</li> </ul>
<p><b>Challenge 2</b> Abuse toward children has not been eliminated</p>	<p>Refine actual measures to a level that can actually be implemented.</p> <ul style="list-style-type: none"> <li>• Setting of performance indicators</li> <li>• Decision of performance measurement method</li> <li>• Decision of range to be addressed with partnership</li> </ul>
<p><b>Challenge 3</b> Infant (ages 0 to 6) injuries often occur in and around the home, and at kindergarten or nursery school</p>	<p>Propose measures to improve safety at nursery schools and kindergartens.</p>

Thank you for your guidance.